

武汉宝源新光电科技有限公司
武汉市洪山区紫菘花园 30 幢 3 单元 602

以下测试之样品是由申请者所提供及确认: 模块排针

SGS 工作编号 : 12409553
测试样品信息 : 主要成份:PPT、磷青铜
样品接收日期 : 2010 年 3 月 8 日
测试周期 : 2010 年 3 月 8 日 - 2010 年 3 月 12 日
测试要求 : 根据客户要求测试
测试方法 : 请参见下一页
测试结果 : 请参见下一页
测试结论 : 基于所送样品进行的测试, 测试结果与欧盟 RoHS 指令 2002/95/EC 以及后续修正指令的要求相符。

通标标准技术服务有限公司
授权签名

Rain Qiao 乔俊娟
部门技术经理

备注: 根据客户申请, SGS 出具了此中文报告, 英文版本可根据客户要求提供. (The Chinese test report is issued according to the applicant's request. The English version is available from SGS if further needed).

This document is issued by the Company under its General Conditions of Service printed overleaf or available on request and accessible at http://www.sgs.com/terms_and_conditions.htm. Attention is drawn to the limitation of liability, indemnification and jurisdiction issues defined therein. Any holder of this document is advised that information contained hereon reflects the Company's findings at the time of its intervention only and within the limits of Client's instructions, if any. The Company's sole responsibility is to its Client and this document does not exonerate parties to a transaction from exercising all their rights and obligations under the transaction documents. Any unauthorized alteration, forgery or falsification of the content or appearance of this document is unlawful and offenders may be prosecuted to the fullest extent of the law. Unless otherwise stated the results shown in this test report refer only to the sample(s) tested. This document cannot be reproduced except in full, without prior approval of the Company.

测试结果:

样本 1 描述: 蓝色塑料

RoHS 指令 2002/95/EC

测试项目	单位	测试方法 (参考)	测试结果	MDL	限值
镉 (Cd)	mg/kg	IEC 62321: 2008, ICP-OES	N.D.	2	100
铅 (Pb)	mg/kg	IEC 62321: 2008, ICP-OES	22	2	1000
汞 (Hg)	mg/kg	IEC 62321: 2008, ICP-OES	N.D.	2	1000
碱性溶液萃取测六价铬 (CrVI)	mg/kg	IEC 62321: 2008, UV-Vis	N.D.	2	1000
多溴联苯(PBBs)之和	mg/kg	-	N.D.	-	1000
单溴联苯	mg/kg	IEC 62321: 2008, GC-MS	N.D.	5	
二溴联苯	mg/kg	IEC 62321: 2008, GC-MS	N.D.	5	
三溴联苯	mg/kg	IEC 62321: 2008, GC-MS	N.D.	5	
四溴联苯	mg/kg	IEC 62321: 2008, GC-MS	N.D.	5	
五溴联苯	mg/kg	IEC 62321: 2008, GC-MS	N.D.	5	
六溴联苯	mg/kg	IEC 62321: 2008, GC-MS	N.D.	5	
七溴联苯	mg/kg	IEC 62321: 2008, GC-MS	N.D.	5	
八溴联苯	mg/kg	IEC 62321: 2008, GC-MS	N.D.	5	
九溴联苯	mg/kg	IEC 62321: 2008, GC-MS	N.D.	5	
十溴联苯	mg/kg	IEC 62321: 2008, GC-MS	N.D.	5	
多溴二苯醚(PBDEs)之和	mg/kg	-	263	-	1000
单溴二苯醚	mg/kg	IEC 62321: 2008, GC-MS	N.D.	5	
二溴二苯醚	mg/kg	IEC 62321: 2008, GC-MS	N.D.	5	
三溴二苯醚	mg/kg	IEC 62321: 2008, GC-MS	N.D.	5	
四溴二苯醚	mg/kg	IEC 62321: 2008, GC-MS	N.D.	5	
五溴二苯醚	mg/kg	IEC 62321: 2008, GC-MS	N.D.	5	
六溴二苯醚	mg/kg	IEC 62321: 2008, GC-MS	13	5	
七溴二苯醚	mg/kg	IEC 62321: 2008, GC-MS	8	5	
八溴二苯醚	mg/kg	IEC 62321: 2008, GC-MS	N.D.	5	
九溴二苯醚	mg/kg	IEC 62321: 2008, GC-MS	15	5	
十溴二苯醚	mg/kg	IEC 62321: 2008, GC-MS	227	5	

注释:

1. mg/kg = ppm
2. N.D. = 未检出 (< MDL)
3. MDL = 方法检测限
4. "-" = 未规定
5. 多溴二苯醚 = 多溴联苯醚

This document is issued by the Company under its General Conditions of Service printed overleaf or available on request and accessible at http://www.sgs.com/terms_and_conditions.htm. Attention is drawn to the limitation of liability, indemnification and jurisdiction issues defined therein. Any holder of this document is advised that information contained hereon reflects the Company's findings at the time of its intervention only and within the limits of Client's instructions, if any. The Company's sole responsibility is to its Client and this document does not exonerate parties to a transaction from exercising all their rights and obligations under the transaction documents. Any unauthorized alteration, forgery or falsification of the content or appearance of this document is unlawful and offenders may be prosecuted to the fullest extent of the law. Unless otherwise stated the results shown in this test report refer only to the sample(s) tested. This document cannot be reproduced except in full, without prior approval of the Company.



样本 2 描述: 铜色金属

RoHS 指令 2002/95/EC

测试项目	单位	测试方法 (参考)	测试结果	MDL	限值
镉 (Cd)	mg/kg	IEC 62321: 2008, ICP-OES	N.D.	2	100
铅 (Pb)	mg/kg	IEC 62321: 2008, ICP-OES	45	2	1000
汞 (Hg)	mg/kg	IEC 62321: 2008, ICP-OES	N.D.	2	1000
沸水萃取法测六价铬 (CrVI)	-	IEC 62321: 2008, UV-Vis	Negative	◇	#
多溴联苯(PBBs)之和	mg/kg	-	N.D.	-	1000
单溴联苯	mg/kg	IEC 62321: 2008, GC-MS	N.D.	5	
二溴联苯	mg/kg	IEC 62321: 2008, GC-MS	N.D.	5	
三溴联苯	mg/kg	IEC 62321: 2008, GC-MS	N.D.	5	
四溴联苯	mg/kg	IEC 62321: 2008, GC-MS	N.D.	5	
五溴联苯	mg/kg	IEC 62321: 2008, GC-MS	N.D.	5	
六溴联苯	mg/kg	IEC 62321: 2008, GC-MS	N.D.	5	
七溴联苯	mg/kg	IEC 62321: 2008, GC-MS	N.D.	5	
八溴联苯	mg/kg	IEC 62321: 2008, GC-MS	N.D.	5	
九溴联苯	mg/kg	IEC 62321: 2008, GC-MS	N.D.	5	
十溴联苯	mg/kg	IEC 62321: 2008, GC-MS	N.D.	5	
多溴二苯醚(PBDEs)之和	mg/kg	-	N.D.	-	1000
单溴二苯醚	mg/kg	IEC 62321: 2008, GC-MS	N.D.	5	
二溴二苯醚	mg/kg	IEC 62321: 2008, GC-MS	N.D.	5	
三溴二苯醚	mg/kg	IEC 62321: 2008, GC-MS	N.D.	5	
四溴二苯醚	mg/kg	IEC 62321: 2008, GC-MS	N.D.	5	
五溴二苯醚	mg/kg	IEC 62321: 2008, GC-MS	N.D.	5	
六溴二苯醚	mg/kg	IEC 62321: 2008, GC-MS	N.D.	5	
七溴二苯醚	mg/kg	IEC 62321: 2008, GC-MS	N.D.	5	
八溴二苯醚	mg/kg	IEC 62321: 2008, GC-MS	N.D.	5	
九溴二苯醚	mg/kg	IEC 62321: 2008, GC-MS	N.D.	5	
十溴二苯醚	mg/kg	IEC 62321: 2008, GC-MS	N.D.	5	

注释:

1. mg/kg = ppm
2. N.D. = 未检出 (< MDL)
3. MDL = 方法检测限
4. ◇ = 点测试:

Negative = 未检测到六价铬, Positive = 检测到;

This document is issued by the Company under its General Conditions of Service printed overleaf or available on request and accessible at http://www.sgs.com/terms_and_conditions.htm. Attention is drawn to the limitation of liability, indemnification and jurisdiction issues defined therein. Any holder of this document is advised that information contained hereon reflects the Company's findings at the time of its intervention only and within the limits of Client's instructions, if any. The Company's sole responsibility is to its Client and this document does not exonerate parties to a transaction from exercising all their rights and obligations under the transaction documents. Any unauthorized alteration, forgery or falsification of the content or appearance of this document is unlawful and offenders may be prosecuted to the fullest extent of the law. Unless otherwise stated the results shown in this test report refer only to the sample(s) tested. This document cannot be reproduced except in full, without prior approval of the Company.



(如果点测试结果为 **Negative** 或不能确认, 测试样品需进一步由沸水萃取法进行测试。)

沸水萃取法:

Negative = 未检测到六价铬

Positive = 检测到六价铬; 每 50cm² 表面积的被测试样品的沸水萃取液中六价铬的浓度等于或大于 0.02mg/kg。

由于未获知样品的存储条件和生产日期, 样品的六价铬测试结果仅能代表测试时样品含六价铬的状态。

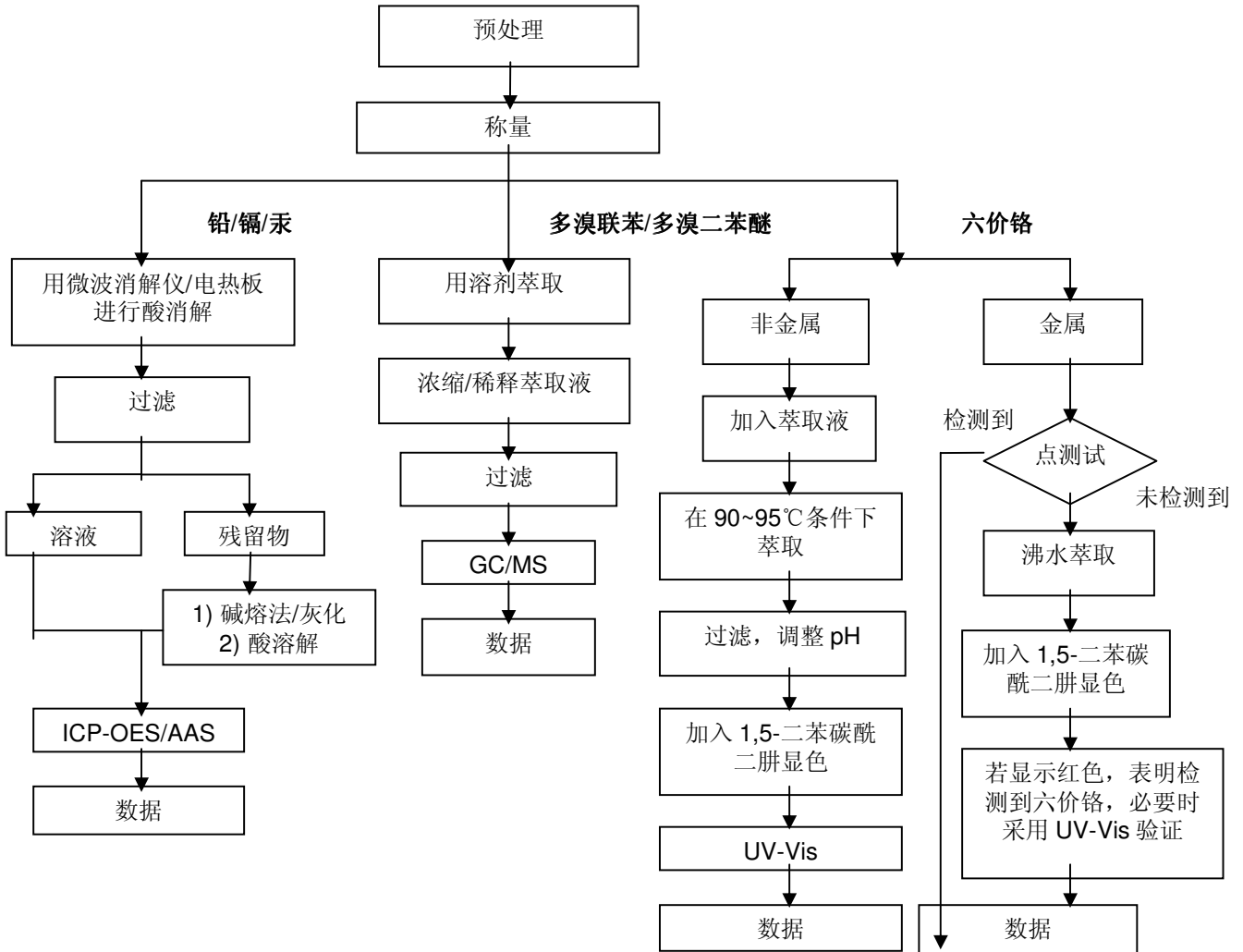
5. # = **Positive** = 阳性

Negative = 阴性

6. "-" = 未规定

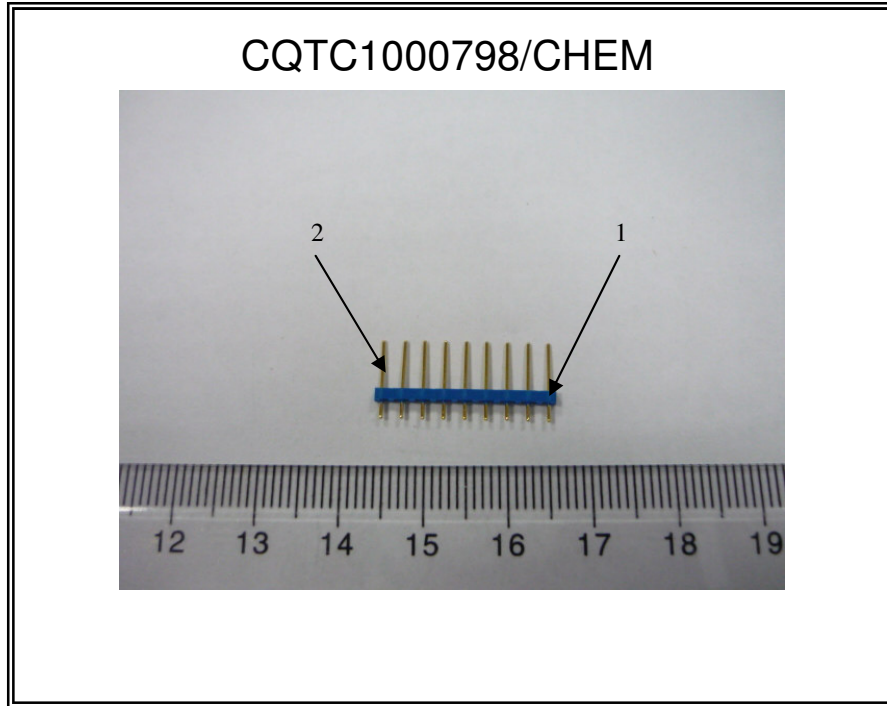
This document is issued by the Company under its General Conditions of Service printed overleaf or available on request and accessible at http://www.sgs.com/terms_and_conditions.htm. Attention is drawn to the limitation of liability, indemnification and jurisdiction issues defined therein. Any holder of this document is advised that information contained hereon reflects the Company's findings at the time of its intervention only and within the limits of Client's instructions, if any. The Company's sole responsibility is to its Client and this document does not exonerate parties to a transaction from exercising all their rights and obligations under the transaction documents. Any unauthorized alteration, forgery or falsification of the content or appearance of this document is unlawful and offenders may be prosecuted to the fullest extent of the law. Unless otherwise stated the results shown in this test report refer only to the sample(s) tested. This document cannot be reproduced except in full, without prior approval of the Company.

- 1) 分析人员: 龙勇, 李艳萍
- 2) 项目负责人: 乔俊娟
- 3) 样品按照下述流程被完全消解 (六价铬和多溴联苯/多溴二苯醚测试除外)。



This document is issued by the Company under its General Conditions of Service printed overleaf or available on request and accessible at http://www.sgs.com/terms_and_conditions.htm. Attention is drawn to the limitation of liability, indemnification and jurisdiction issues defined therein. Any holder of this document is advised that information contained hereon reflects the Company's findings at the time of its intervention only and within the limits of Client's instructions, if any. The Company's sole responsibility is to its Client and this document does not exonerate parties to a transaction from exercising all their rights and obligations under the transaction documents. Any unauthorized alteration, forgery or falsification of the content or appearance of this document is unlawful and offenders may be prosecuted to the fullest extent of the law. Unless otherwise stated the results shown in this test report refer only to the sample(s) tested. This document cannot be reproduced except in full, without prior approval of the Company.

样品照片:



此图片仅限于随 SGS 正本报告使用

*** 报告完 ***

This document is issued by the Company under its General Conditions of Service printed overleaf or available on request and accessible at http://www.sgs.com/terms_and_conditions.htm. Attention is drawn to the limitation of liability, indemnification and jurisdiction issues defined therein. Any holder of this document is advised that information contained hereon reflects the Company's findings at the time of its intervention only and within the limits of Client's instructions, if any. The Company's sole responsibility is to its Client and this document does not exonerate parties to a transaction from exercising all their rights and obligations under the transaction documents. Any unauthorized alteration, forgery or falsification of the content or appearance of this document is unlawful and offenders may be prosecuted to the fullest extent of the law. Unless otherwise stated the results shown in this test report refer only to the sample(s) tested. This document cannot be reproduced except in full, without prior approval of the Company.